

(32)

L-4004  
MICROPIX

HIGH DEFINITION CATHODE RAY TUBE  
(Tentative)

3,000 TV LINE RESOLUTION  
16" ROUND GLASS TUBE  
60" RADIUS FACE PLATE, NEUTRAL DENSITY  
GREY GLASS, APPROX. 76% TRANSMISSION  
METALLIZED PHOSPHOR SCREEN  
ACTIVE SCREEN AREA 14 $\frac{1}{2}$ "  
SCREEN VOLTAGE UP TO 30,000 VOLTS

Mounting Position Any  
Cap - recessed small cavity  
(JEDEC No. J1-21)  
Base - small shell duodecal  
(JEDEC No. B7-51)  
Bulb - J127D1

DATA

Heater voltage (AC or DC)	6.3 volts
Heater current	0.6 amperes
Direct Interelectrode Capacitances:	
Grid #1 to all other electrodes	8 unuf
Cathode to all other electrodes	5 unuf
*Phosphor Screen	
Aluminized	P-4
Fluorescence	White
Phosphorescence	White
Decay Rate	Fast
Focusing Method	Magnetic
Deflection Method	Magnetic
Deflection Angle	70°

\*This tube may be obtained with other standard phosphors on special order.

MECHANICAL DATA

Overall Length	22" $\pm$ $\frac{1}{4}$ "
Maximum Diameter	15 $\frac{7}{8}$ " $\pm$ $\frac{3}{16}$ "
Minimum Useful Screen Size	14 $\frac{1}{2}$ "

MAXIMUM RATINGS

Screen (anode) voltage	30,000 DC
Grid #2 voltage	700 DC
Grid #1 voltage:	
Negative bias value	200 DC
Positive bias value	-1 DC
Positive peak value	0 volts
Peak heater - cathode voltages:	
Heater negative with respect to cathode	150 DC
Heater positive with respect to cathode	150 DC

TYPICAL OPERATION

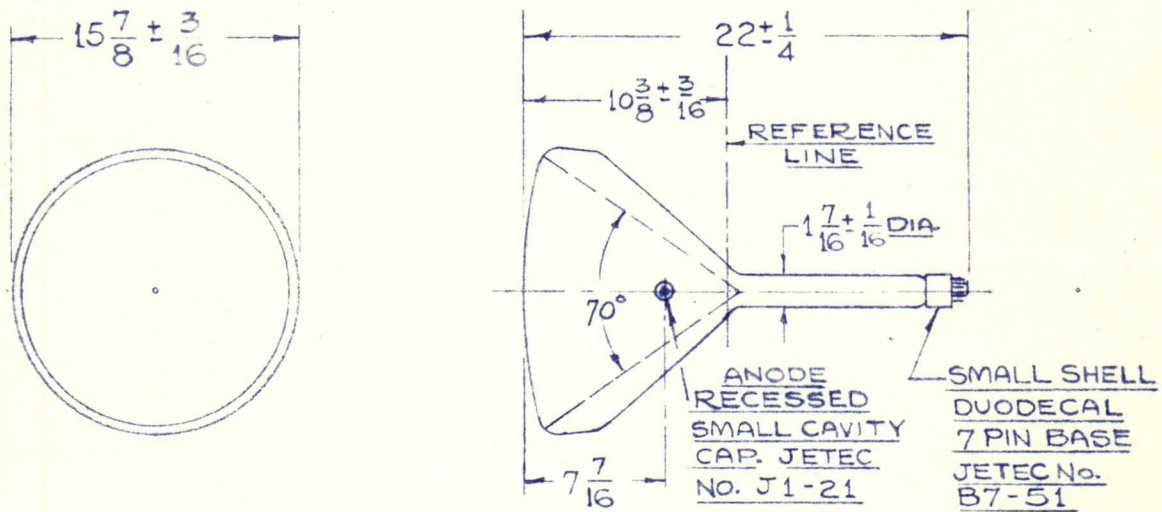
Anode voltage	27,000 DC
Grid #2 voltage	500 DC
Grid #1 voltage for visual extinction of focused spot	-100 DC
Circuit values:	
Grid #1 circuit resistance	1.5 megs. max.

LITTON INDUSTRIES  
Electron Tube Division, Electronic Display Laboratory  
960 Industrial Rd., San Carlos, Calif.  
LYtell 1-8411

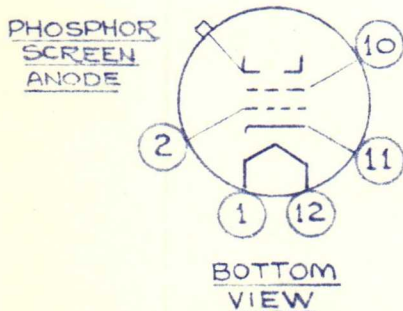
3/31/59

L-4004  
"MICROPIX"  
16 INCH ROUND  
HIGH DEFINITION CRT

DIMENSIONAL OUTLINE



BASING DIAGRAM



PIN 1 - HEATER  
PIN 2 - GRID No.1  
PIN 10 - GRID No.2

PIN 11 - CATHODE  
PIN 12 - HEATER  
BUTTON - ANODE