

VALVE ELECTRONIC **CV 447**

GENERAL POST OFFICE: E-IN-C (S)

Specification: GFO/CV447/Issue 3	<u>SECURITY</u>	
Dated: February, 1959	<u>Specification</u>	<u>Valve</u>
To be read in conjunction with K 1001	Unclassified	Unclassified

→ indicates a change

<u>TYPE OF VALVE:</u> Hot Cathode Mercury Vapour Thyatron			<u>MARKING</u> See K 1001/4		
<u>CATHODE:</u> Directly Heated.					
<u>ENVELOPE:</u> Glass.					
<u>PROTOTYPE</u> 3V/531E					
<u>RATING</u>		Note	<u>BASE</u> See drawing, page 3.		
Heater Volts	(V)	5.0	A	<u>CONNECTIONS</u>	
Nominal Current	(A)	20.0	A	Pin	Electrode
Max. Peak Inverse Voltage	(kV)	20	A	1	Filament
Max. Peak Anode Current	(A)	10.0	A	2	Grid
Max. Average Anode Current	(A)	2.5	A	3	Filament
Condensed Mercury temperature range with forced ventilation.		15°C to 65°C	A	TC	Anode
			<u>TOP CAP</u> See drawing, Page 3.		
			<u>DIMENSIONS</u> See drawing, Page 3.		
			<u>PACKAGING</u> See K 1005		

NOTE

A. These ratings apply to operation with a choke input filter and a supply frequency of 50 c.p.s.

CV 447

TESTS

To be performed in addition to those applicable in K1001

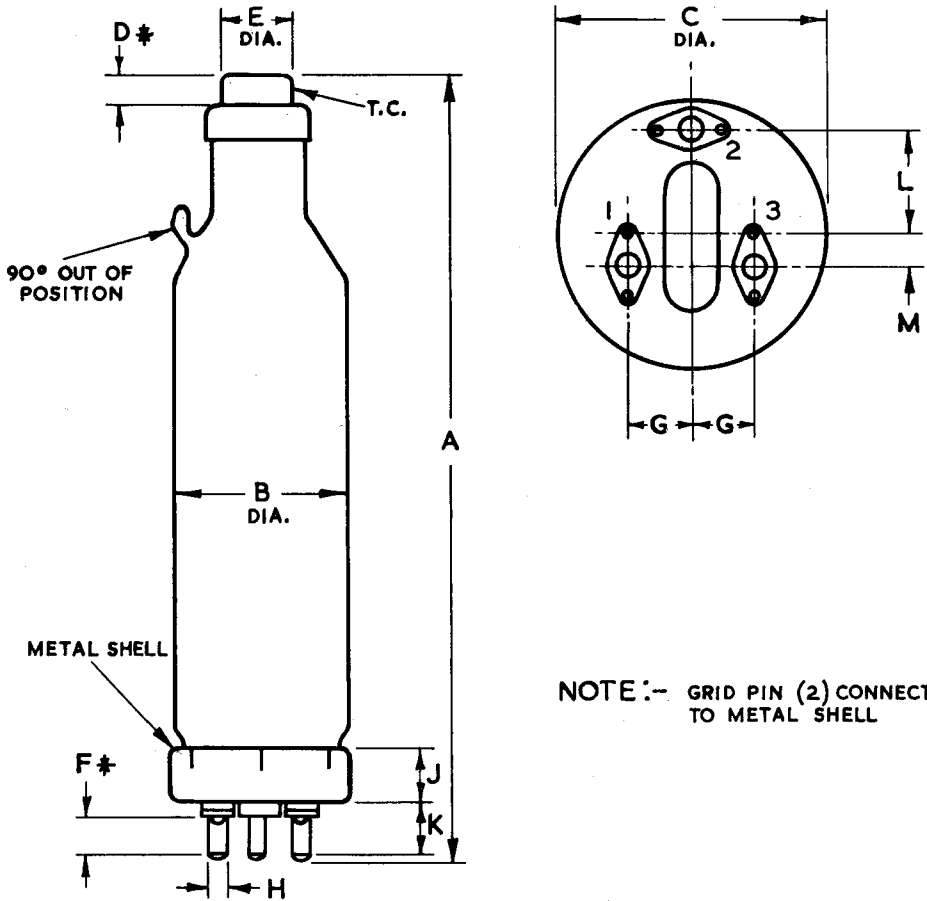
	Test Conditions				Test	Limits		No.	Note
	Vf (V)	Vg1 (V)	Va (kV)	Ia (A)		Min.	Max.	Tested	
a	5.0	-	-	-	If (A)	17.0	23.0	100%	1
b	5.0	g1 Connected to Anode through Rg1 500 ohms	25 volts DC in series with a Resis- tance R	5.0	Volt drop (V)	-	16.0	100%	
c	5.0	-20V in series with 2500 ohms	<u>P.I.V.</u> 0	0	Operational Test. Two Valves in FW Rectifier Circuit.			100%	2
	5.0	-20V in series with 2500 ohms.	20	0	Raise Va slowly until PIV is 20 kV. Maintain for 2 mins.				The Valve shall not strike and no arc back or flashover shall occur during the 2 mins holding period.
	5.0	+20V in series with 2500 ohms.	20	1.25	Raise Va slowly until PIV is 20 kV. Maintain for 3 mins.				No arc back of flash- over shall occur dur- ing the 3 minutes holding period.

NOTES

- Each valve shall be preheated at Vf 5.0 volts for not less than 15 mins. before applying this or any subsequent test. If the filament supply is interrupted between tests a similar preheating period of 15 mins. shall precede any subsequent test.
- For this test both valves shall be mounted in a holder so arranged that a supply of air at a pressure of not less than $1\frac{1}{2}$ inches of water and a temperature of $38^{\circ}\text{C} \pm 2^{\circ}\text{C}$ is directed at the base of the valve.

CV 447

DIMENSIONAL DIAGRAM



NOTE :- GRID PIN (2) CONNECTED TO METAL SHELL

DIM.	MILLIMETRES	DIM.	MILLIMETRES
A	435 MAX.	G	22.00 ± 0.25
B	95.3 MAX.	H	9.53 ± 0.05
C	96.04 ± 0.4	J	25.4 ± 0.4
D	10.0 MIN.	K	28.57 ± 0.51
E	36.00 ± 0.25	L	36.00 ± 0.25
F	23.80 ± 0.51	M	10.00 ± 0.25

DENOTES :- CONTACT LENGTH