

Ferranti

1240/54HM

1240/54L3M

RADAR TUBES

12in. diameter tubes with narrow neck and small deflection angle. Suitable for use with either Transistor or Valve circuits in Raw or Synthetic Radar and symbol presentation.

FOCUS	Magnetic	
DEFLECTION	Magnetic-45°(approx)	
SCREEN.		
Phosphor	1240/54HM	1240/54L3M
Fluorescence	Type 'H'*	Type 'L3'* †
Afterglow	Orange	Orange
Persistence	Very Long	Long

PHYSICAL DETAILS.

Base	B9A/D	
Anode Cap	CT8 Cavity Type	
Max. Overall Length	653 mm.	
Neck Diameter	23 mm. (nom.)	
Mounting Position	Any	

For other dimensions see outline drawing overleaf.

BASE CONNECTIONS.

Pin 1—Grid	Pin 6—I.C.	
Pin 2—I.C.	Pin 7—N.C.	
Pin 3—Cathode	Pin 8—I.C.	
Pin 4—Heater	Pin 9—Ist Anode	
Pin 5—Heater	Side Contact—2nd Anode	

HEATER.

Heater Voltage	6.3 volts	
Heater Current	0.3 amps	

RATING.

Max. A ₁ Voltage	600 volts	
Max. A ₂ Voltage	15 kV	
Min. A ₂ Voltage	8 kV	
Max. V _{h-k}	200 volts	
Max. R _{g-k}	1.5 MΩ	
Max. R _{h-k}	1.0 MΩ	

TYPICAL OPERATION.

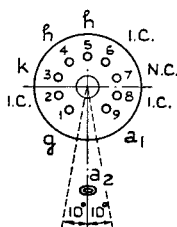
With Valve Drive.

1st Anode Voltage	300 volts	
2nd Anode Voltage	12 kV	
V _g for visual cut-off	-30 to -90 volts	

With Transistor Drive.

1st Anode Voltage	100 volts	
2nd Anode Voltage	12 kV	
V _g for visual cut-off	-25 volts	

Recommended position of focus coil is 170 mm in front of the grid.



Base Connections Underside View of Base

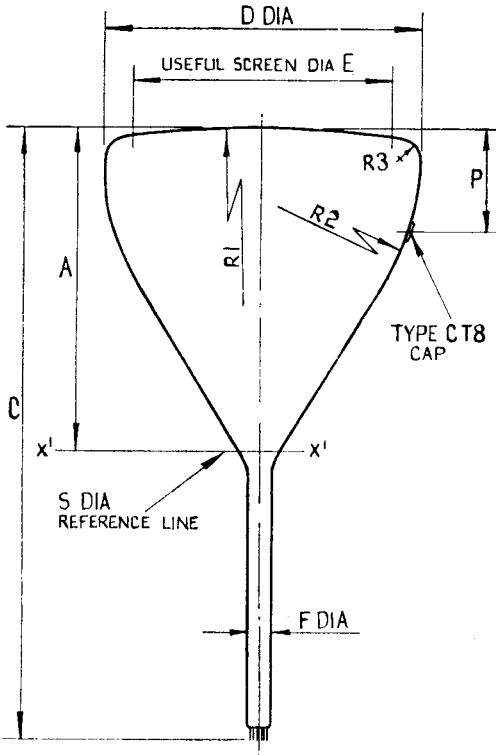
*These phosphors are liable to burn if operated with a spot which is stationary or slow moving, and tubes should not be operated under such conditions, even at low beam current. Alternative phosphors for this application can be supplied on request.

†Phosphor Type L3 is flicker free at 10 c/s.



I240/54HM

I240/54L3M



DIM.	mm.	IN.	DIM.	mm.	IN.
A	322 ± 3	12.67 ± .12	P	90 ± 5	3.54 ± .20
C	645 ± 8	25.39 ± .31	R1	1000	39.37
D	305 ± 2	12.00 ± .08	R2	426	16.77
E	250 MIN.	9.84	R3	19	.75
F	23 ± 1	.906 ^{+0.00} _{-.033}	S	25	.984

ORIGINAL DIMENSIONS IN MILLIMETERS