

OBJECTIVE FOR DEVELOPMENTAL TYPE

Z-2689*

PLANAR DIODE

The Z-2689 is a cathode-type diode of ceramic and metal planar construction intended for use as a low-current rectifier.

GENERAL

Electrical

Cathode - Coated Unipotential

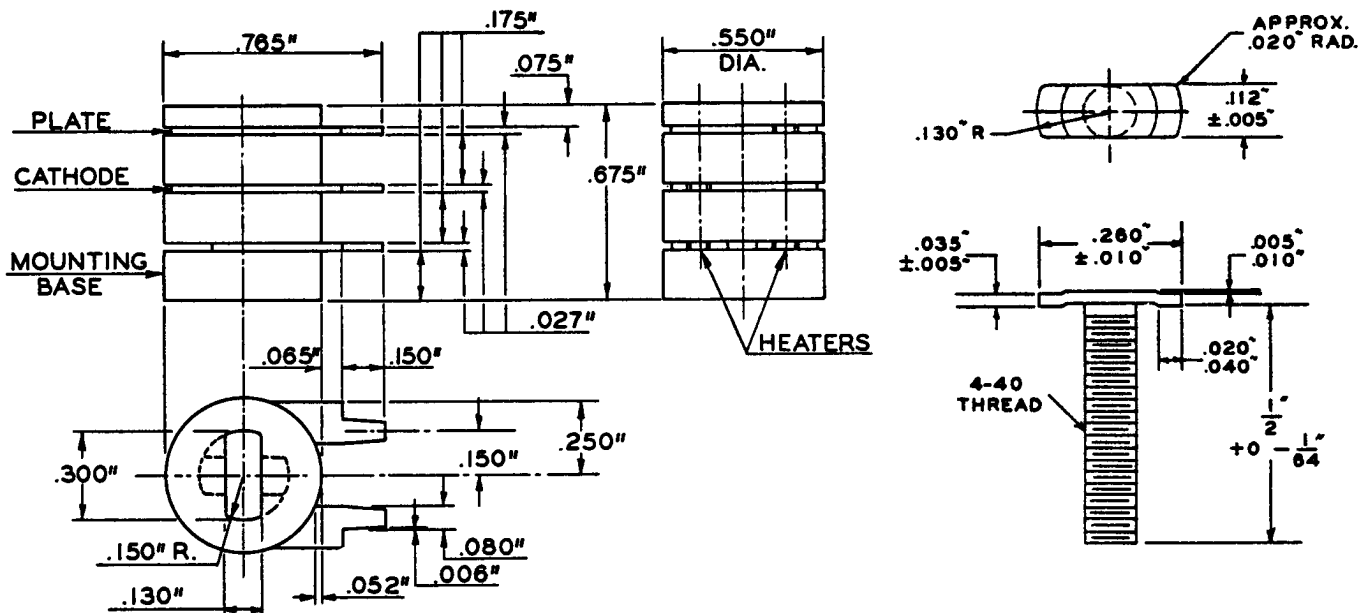
Heater Characteristics and Ratings

Heater Voltage, AC or DC+	6.3±0.6	Volts
Heater Current‡	0.4	Amperes
Direct Interelectrode Capacitances§		
Plate to Cathode	2.5	pf
Heater to Cathode	2.6	pf

Mechanical

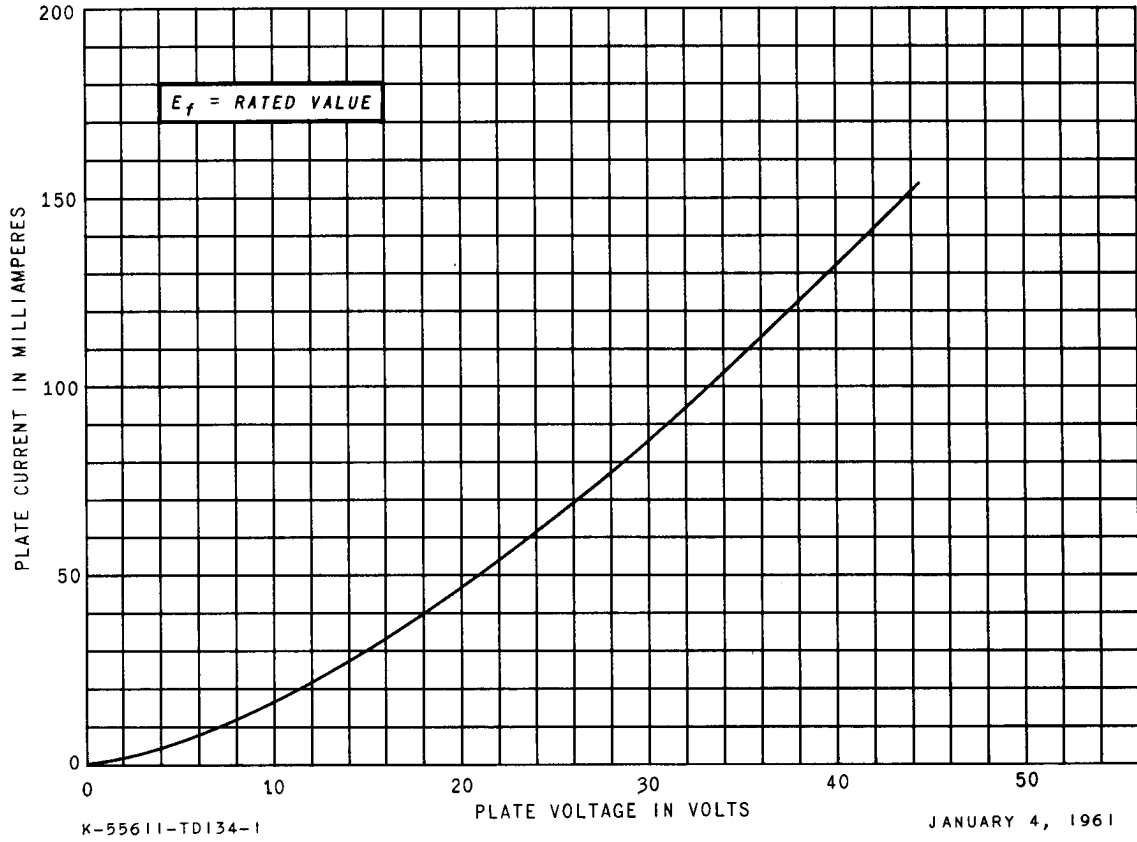
Operating Position - Any

→ Outline Drawing



Z-2689

AVERAGE PLATE CHARACTERISTICS



RECEIVING TUBE DEPARTMENT

GENERAL  **ELECTRIC**

Owensboro, Kentucky