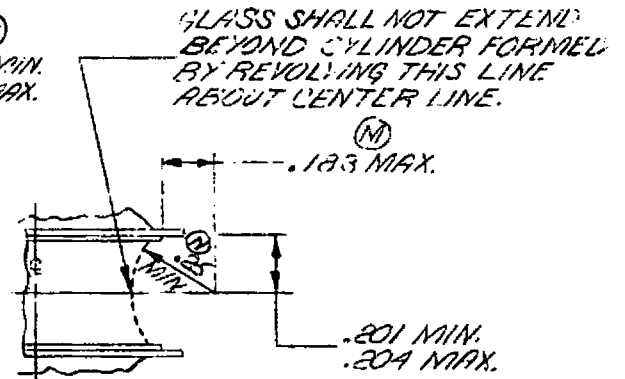
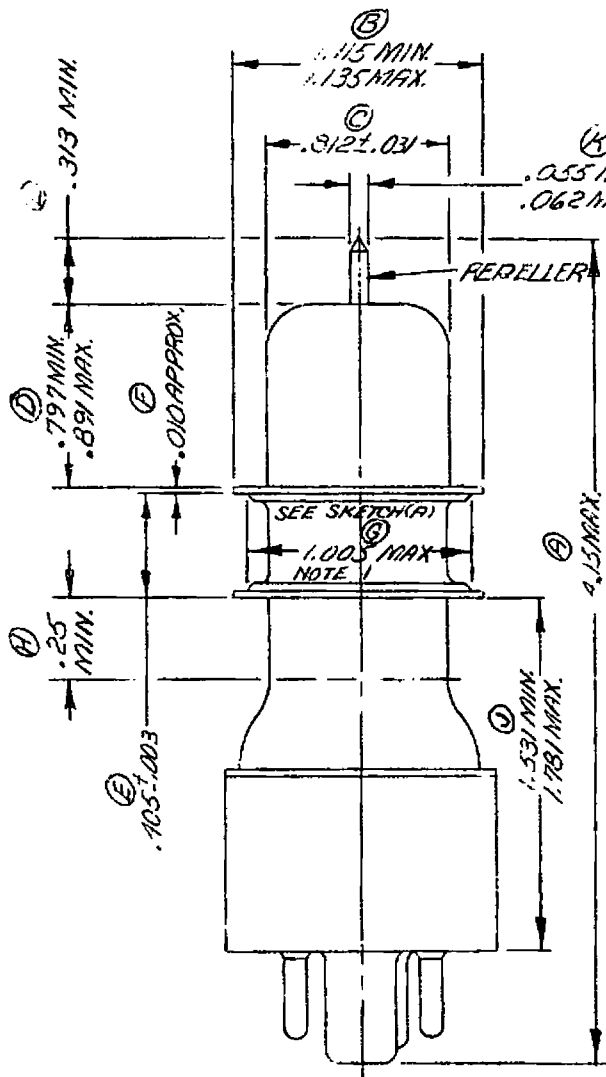


JAN-TYPE 6133



SKETCH A

NOTE 1:
DIMENSION APPLIES TO EACH DISC SEPARATELY.

NOTE 2:
DISCS SHALL BE CONCENTRIC WITH EACH OTHER WITHIN 0.015". THE DISCS SHALL BE CONCENTRIC WITHIN .099".

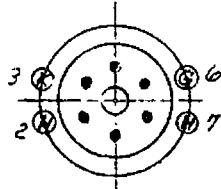
NOTE 3:
DISCS SHALL BE SMOOTH, FREE FROM TEARS AND SHALL BE GOLD PLATED 20MMSI OR 10MMSI NICKEL PLUS 10MMSI SILVER.

NOTE 4:
THE CAVITY DIMENSIONS WHICH CORRESPOND TO THE 0.405 ± 0.003 DIMENSIONS ON THE TUBES SHALL BE 0.401" MAX., 0.396" MIN.

ALL DIMENSIONS IN INCHES.

DESIGN TEST: A, C, D, H, J,
TYPE APPROVAL TEST: F, K, L,
NOTE 3.

PRODUCTION TEST: B, E, G, M, N,
NOTES 1 & 2.



BOTTOM VIEW OF
STANDARD INTERMEDIATE
OCTAL BASE

6133

6 SEPT. 1951