

9 September 1963

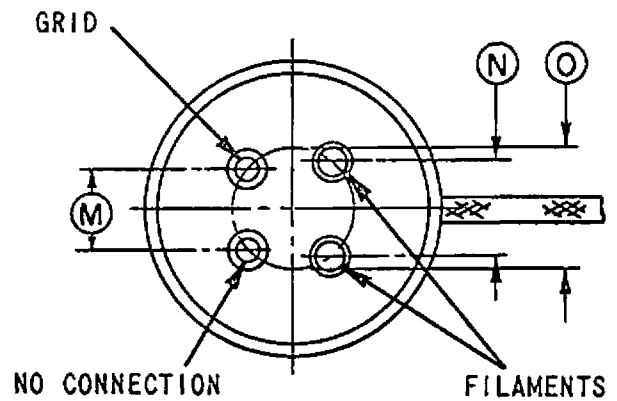
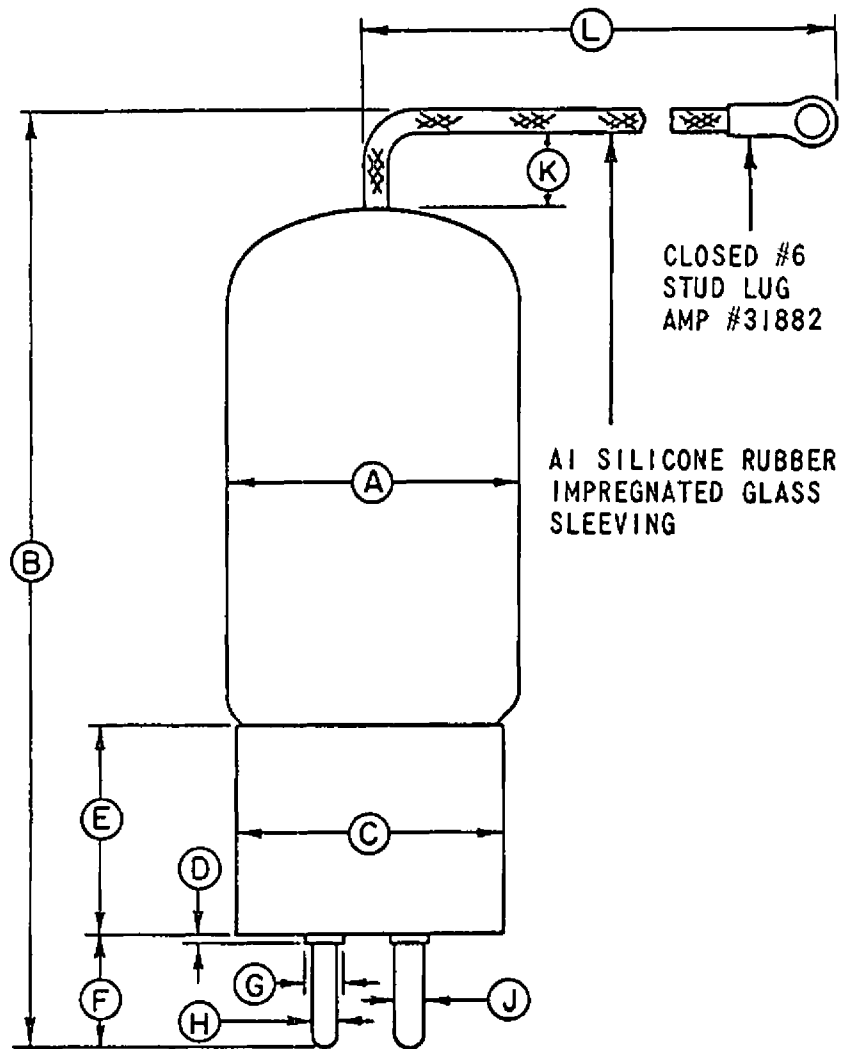
6478 INERT GAS THYRATRON

Ratings (Absolute maximum)

Filament voltage	2.5 V AC or DC $\pm 10\%$
Filament current	6.5 - 8.5 A
Cathode warm up time	15 secs.
Cathode	Oxide Coated
Peak inverse voltage	1500 Vac
Average anode current continuous	1.5 A
Overload anode current, 1 min.	2.5 A
Peak current continuously recurring	20 A
Surge current .1 sec.	77 A
Arc drop at 1.5 A	12.0 V Max.
Peak arc drop at 20 A	30.0 V Max.
Grid voltage for conduction at Epp 1000 Vac Ib 1.5 A	-5 to -17 Vdc
Deionization time	80 uSec. Max.
Grid current	5 uA Max.
Max. frequency of operation	1250 cps.
Shock rating	100 g
Max. altitude	65,000 ft.
Ambient temperature	-75° C to +85° C
Envelope and dimensions	See outline drawing

6478 INERT GAS THYRATRON

REF.	DIMENSIONS
A	1-9/16 MAX.
B	4-7/8 MAX.
C	1.337 MIN. . 1.377 MAX.
D	.065 MAX.
E	1.087 MAX.
F	.596 MAX.
G	.195 MAX.
H	.122 MIN. . 128 MAX.
J	.153 MIN. . 159 MAX.
K	3/8 MAX.
L	4-1/2 MAX.
M	.437 MAX.
N	.468 MAX.
O	.640 MAX.



ALL DIMENSIONS IN INCHES