

JETEC TYPE DESIGNATION REGISTRATION FORM TR TUBESManufacturers Designation: MPT-13

Date: 8-14-62

JETEC Designation: 7901Manufacturer: Metcom, Inc., Salem, Mass.General Characteristics:

The 7901 is a broad band TR tube designed to effectively decouple the receiver from a common transmitting and receiving antenna during a period of transmission. It is a separate cavity type. Its operational band is from 300 to 600 megacycles.

Electrical Data - Typical Values

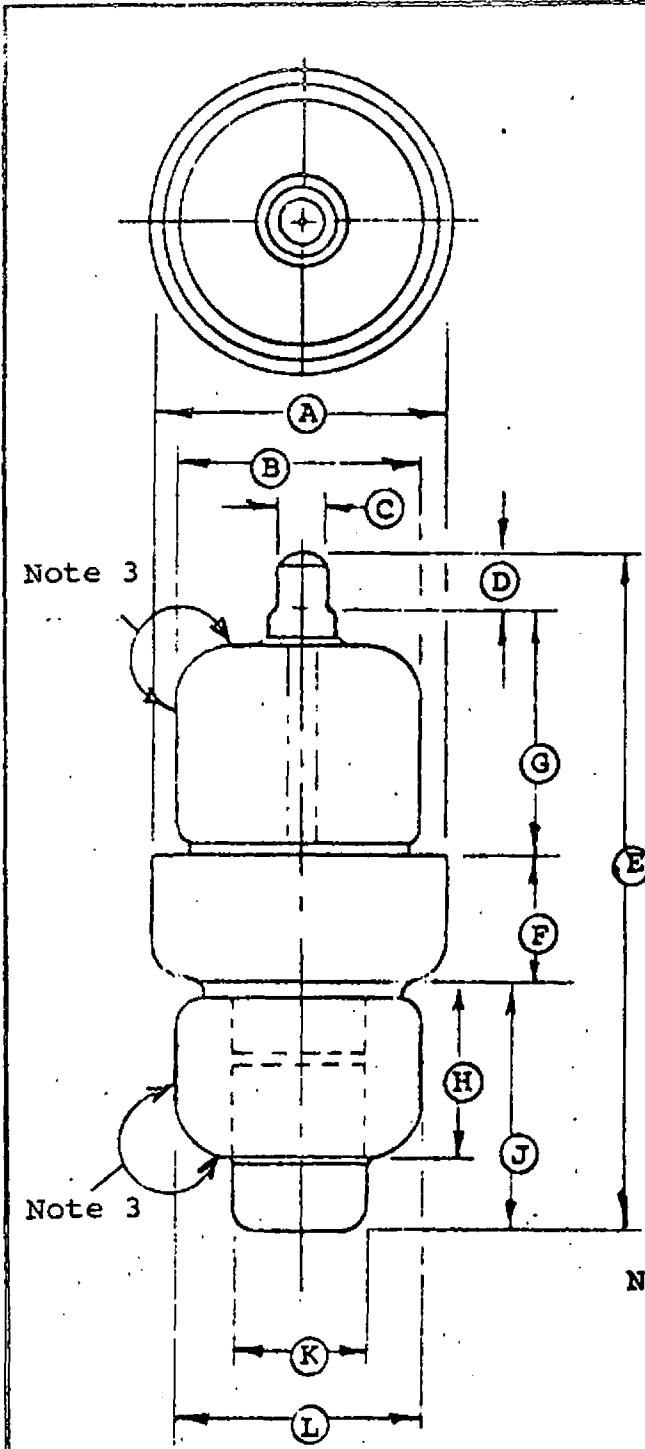
Tuning Range	459 to 461 Mc/s
Ignitor Ignition Time	5 sec.
Ignitor voltage Drop at $I_i=150\mu\text{A dc}$	180 to 350 volts
Peak Leakage Power at 425Mc; $p_o=30\text{kw}$	5 w
Insertion Loss at $f_o$ Mc, $I_i=0$	2 db
Ignitor Interaction at 461Mc, $I_i=200\mu\text{A dc}$	0.2db
Recovery Time at 30 kw peak, 3 db down	150 usec

Mechanical Data - General

Dimensions	Outline dated 7-25-60
Mounting Position	Any
Weight, approximately	2 oz.

Absolute Maximum Ratings

Transmitter Peak Power	30 kw
Transmitter Average Power	50 W
Ignitor Current	100 to 200 Vdc
Duty Cycle	.0018
Pulse Duration	6 usec
Open Circuit Ignitor Voltage (Min.)	-700 Vdc



Ref.	Dimensions
A	1.500 Dia. ±.010
B	1.400 Dia. Max.
C**	0.250 Dia. Nom.
D**	0.240 Min.
E	3.600 Max.
F**	0.650 ±.010
G*	1.150 ±.060
H	0.830 Max.
J	1.260 +.000 - .030
K*	0.650 Dia. ±.007
L	1.400 Dia. Max.

Note 3

Note 3

- NOTES:
1. Dimensions (A) and (K) to be concentric within .020 T.I.R.
  2. Diameters (B) and (L) shall not exceed a circle of 1.400 diameter concentric with diameter (A)
  3. Envelope within area indicated may be either glass or metal.

All dimensions are in inches metal.

<b>SPECIFICATION SHEET</b>		METCOM, INC. 76 LAFAYETTE ST. SALEM, MASS.
OUTLINE	7901	7/25/60